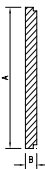


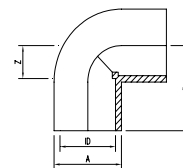
PLAIN SOCKET

SIZE	ID (mm)	A (mm)	B (mm)	Z (mm)
100	114	141	139	6
150	168	203	192	6
200	219	250	246	6
225	225	247	252	6
250	250	275	276	6
315	315	341	307	6
355	355	384	347	6
400	400	440	392	6
450	450	493	440	10
500	501	548	490	10
560	561	593	594	12
630	631	688	620	14



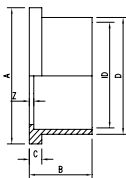
BLANK FLANGE STUB STYLE

SIZE	A (mm)	B (mm)
100	159	17
140	192	20
150	214	22
200	270	25
225	270	25
250	331	32
315	376	38
355	440	43
400	488	52
450	539	58
500	613	64
630	708	81



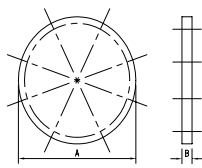
ELBOW 90°

SIZE	ID (mm)	A (mm)	B (mm)	Z (mm)
100	110	159	3	
140	119	192	3	
150	164	214	3	
200	214	270	3	
225	217	270	3	
250	242	331	3	
315	307	376	3	
355	347	440	3	
400	392	488	3	
450	440	539	3	
500	490	613	3	
630	620	708	3	



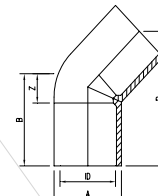
STUB FLANGE

SIZE	ID (mm)	A (mm)	B (mm)	C (mm)	D (mm)	Z (mm)
100	114	159	70	20	133	5
150	168	214	100	24	191	8
200	219	270	134	25	250	8
225	225	270	127	25	250	8
250	250	331	139	30	287	8
315	315	376	169	35	350	8
355	355	440	189	37	400	8
400	400	488	220	50	435	14
450	450	539	245	50	514	14
500	501	613	270	50	548	14
630	631	708	335	64	685	16



BLANK FULL FLANGE UNDRILLED

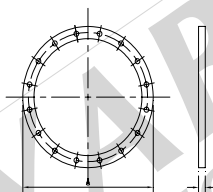
SIZE	A (mm)	B (mm)
100	220	17
140	225	20
150	285	22
200	335	25
225	335	25
250	405	32
315	455	38
355	525	43
400	580	52
450	640	58
500	705	64
560	760	73
630	825	81



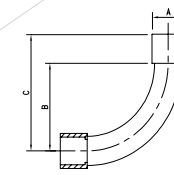
ELBOW 45°

SIZE	ID (mm)	A (mm)	B (mm)	Z (mm)
100	114	142	129	84
150	168	207	180	88
200	219	259	260	116
225	225	259	235	116
250	250	284	258	127
315	315	355	322	158
355	355	439	408	202
400	400	439	408	202

SIZE	ID (mm)	B (mm)	A (mm)	PCD (mm)	H (mm)	D (mm)
100	137	8	215	178	4	18
140	167	10	225	210	8	18
150	195	10	280	235	8	22
200	255	10	335	292	8	22
225	255	20	335	292	8	22
250	312	20	405	356	12	22
315	355	20	455	406	12	22
355	405	20	525	470	12	22
400	440	20	580	521	12	26
450	519	25	640	584	12	26
500	553	30	705	641	16	26
560	694	32	760	699	16	30
630	690	32	825	756	16	30

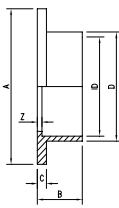


BACKING RING



MOULDED BEND 90°

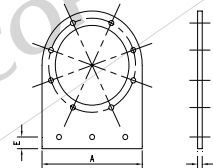
SIZE	ID (mm)	A (mm)	B (mm)	C (mm)
100	114	137	220	284



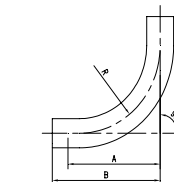
FULL FACE FLANGE UNDRILLED

SIZE	ID (mm)	A (mm)	B (mm)	C (mm)	Z (mm)
100	114	220	70	17	5
150	168	285	100	22	8

SIZE	ID (mm)	A (mm)	B (mm)	C (mm)	D (mm)	E (mm)	F (mm)
100	220	159	152	14	22	8	
140	225	189	192	14	22	10	
150	285	216	229	14	33	10	
200	335	246	280	14	33	10	
250	335	298	340	14	40	12	
315	405	348	390	22	40	12	

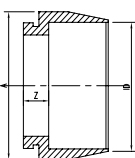


VALVE SUPPORT PLATE



BEND 90° R = 1.2D

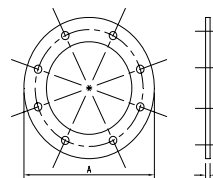
SIZE	R (mm)	A (mm)	B (mm)
100	137	232	289
140	168	282	353
150	202	337	421
200	263	436	546
225	270	448	561
250	300	497	622
315	378	624	782
355	426	702	880
400	481	790	990
450	541	887	1113
500	601	985	1235
630	721	1180	1480



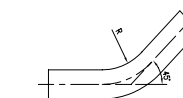
SHOULDER END

SIZE	ID (mm)	A (mm)	B (mm)	Z (mm)
100	114	141	108	45
150	168	208	140	50
200	219	269	170	55
250	250	308	213	66
315	315	355	241	65
355	355	425	273	69
400	400	477	305	286
450	450	527	355	311
500	501	585	405	336

SIZE	ID (mm)	A (mm)	B (mm)
100	110	220	3
150	119	235	3
150	164	285	3
200	214	335	3
225	214	335	3
250	242	405	3
315	307	455	3
355	347	525	3
400	392	580	3
450	440	640	3
500	490	705	3
560	549	760	3
630	620	825	3

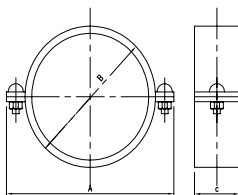


GASKET (FULL FACE STYLE)



BEND 45° R = 1.2D

SIZE	R (mm)	A (mm)	B (mm)
100	137	152	175
140	168	184	213
150	202	219	254
200	263	282	328
225	270	290	337
250	300	321	373
315	378	402	468
355	426	452	526
400	481	508	591
450	541	571	664
500	601	633	737
630	721	758	882



SHOULDER STYLE COUPLING

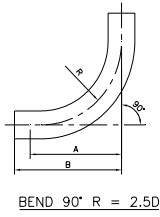
SIZE	A (mm)	B (mm)	Z (mm)
100	205	162	50
150	275	214	52
200	340	280	63
250	410	348	69
315	489	395	69
355	555	448	76
400	568	482	73
450	619	539	79
500	698	597	76

NOTE:  
 1. FOR LEGEND, ABBREVIATIONS, AND GENERAL NOTES SEE DWG NO. SYABSD001.  
 2. ALL DIMENSIONS ARE IN mm UNLESS OTHERWISE STATED.  
 3. DESIGN STANDARD COMPLY WITH MS 1419 : 1997.

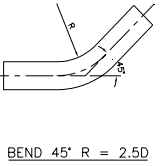
REV	DESCRIPTION	DATE

**SYARIKAT BEKALAN AIR SELANGOR SDN BHD**  
 PETI SURAT 5001,  
 JALAN PANTAI BAHRU,  
 59990, KUALA LUMPUR.  
 TEL NO : 03 - 2282 6244 / 03 - 2283 1111  
 FAX NO : 03 - 2282 5498  
 LAMAN WEB : www.syabas.com.my  
 EMAIL : pupel@syabas.com.my

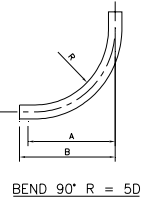
PROJECT :  
 DRAWING TITLE :  
**ABS PIPE FITTINGS - (SHEET 1 OF 3)**  
 DRAWN BY : SHAHRUL      DESIGNED : SAT  
 CHECKED : HS              APPROVED : LPL  
 SCALE : NTS                DATE : OCT 2006  
 DRAWING NO.



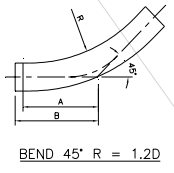
SIZE	R (mm)	A (mm)	B (mm)
100	286	380	438
140	351	465	535
150	421	556	640
200	548	721	831
225	563	741	854
250	626	823	948
315	789	1034	1192
355	889	1164	1342
400	1001	1311	1511
450	1126	1475	1698
500	1251	1636	1886
630	1502	1961	2261



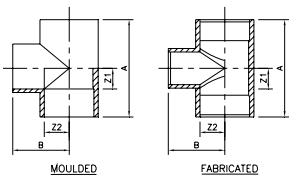
SIZE	R (mm)	A (mm)	B (mm)
100	286	213	237
140	351	259	288
150	421	310	344
200	548	400	446
225	563	411	458
250	626	456	508
315	789	572	638
355	889	644	717
400	1001	724	807
450	1126	813	907
500	1251	903	1008
630	1502	1135	1266



SIZE	R (mm)	A (mm)	B (mm)
100	572	672	739
140	701	834	904
150	842	999	1083
200	1096	1298	1407
225	1127	1354	1447
250	1252	1483	1609
315	1557	1864	2021
355	1777	2099	2276
400	2003	2363	2564
450	2253	2687	2882
500	2463	2951	3201
630	3153	3706	4031

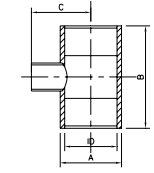


SIZE	R (mm)	A (mm)	B (mm)
100	572	347	371
140	701	424	453
150	842	506	541
200	1096	656	701
225	1127	674	721
250	1252	748	800
315	1557	940	1005
355	1777	1058	1131
400	2003	1190	1273
450	2253	1338	1431
500	2503	1485	1589
630	3153	1864	1999



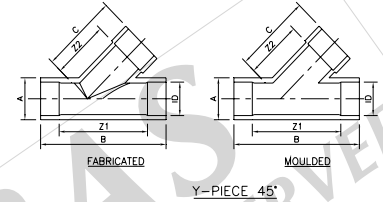
SIZE	ID (mm)	A (mm)	B (mm)	Z1 (mm)	Z2 (mm)	TYPE
100	114	258	129	64	64	M
150	168	360	180	88	88	M
200	219	365	235	118	118	M
225	265	472	247	124	124	M
250	250	520	326	162	162	M
315	315	652	326	162	162	M
355	355	891	421	263	239	M
400	400	990	471	289	265	M
450	450	1083	524	310	292	F
500	501	1272	562	380	306	F

EQUAL TEE



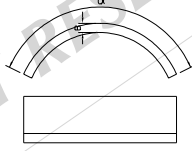
REDUCING TEE SPIGOT OFFTAKE

SIZE	ID (mm)	A (mm)	B (mm)	Z1 (mm)
200-100	219	277	420	250
250-150	250	339	500	325
315-150	315	387	600	350
315-200	315	387	650	375
355-150	355	450	650	375
355-200	355	450	700	400
400-150	400	500	700	400
400-200	400	500	750	425
400-250	400	500	800	450
450-150	450	559	750	425
400-200	450	559	800	475
450-250	450	559	850	500
450-315	450	559	900	525
500-150	500	618	800	450
500-200	500	618	850	500
500-250	500	618	900	525
500-315	500	618	950	550



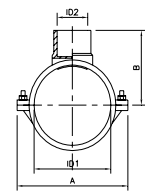
Y-PIECE 45°

SIZE	ID (mm)	A (mm)	B (mm)	C (mm)	Z1 (mm)	Z2 (mm)	Z3 (mm)	TYPE
100	114	220	550	375	370	285	100	F
150	168	227	700	475	468	350	128	F
200	219	277	700	475	462	356	123	F
250	250	339	750	575	458	429	108	F



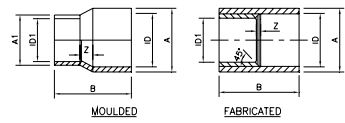
BEND 45° R = 1.2D

SIZE	O (mm)	A (mm)	B (mm)	D (mm)
100	120	300	9	1 1/4"
140	120	300	11	1 1/4"
150	120	300	13	1 1/4"
200	120	300	17	2"
225	60	300	17	2"
250	60	300	19	2"
315	60	300	24	2"
355	60	300	28	2"
400	60	300	30	2"
450	60	300	35	2"
500	60	300	38	2"



TAPPING SADDLE

SIZE	A (mm)	B (mm)	ID1 (mm)	ID2 (mm)
100x50	175	108	114	60



REDUCING SOCKET

SIZE	A (mm)	A1 (mm)	B (mm)	ID (mm)	ID1 (mm)	Z (mm)	TYPE
100x80	141	110	138	89	64	21	M
150x100	204	142	204	168	47	47	M
250x225	275	-	275	316	251	13	F
315x250	341	-	328	324	124	19	F
355x315	384	-	382	356	316	20	F
400x355	440	-	427	401	356	23	F
450x400	493	-	479	451	401	24	F
500x450	548	-	530	501	451	25	F
630x500	668	-	596	632	501	38	F

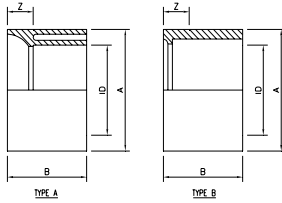
NOTE:  
 1. FOR LEGEND, ABBREVIATIONS, AND GENERAL NOTES SEE DWG NO. SYAS/STD01.  
 2. ALL DIMENSIONS ARE IN mm UNLESS OTHERWISE STATED.  
 3. DESIGN STANDARD COMPLY WITH MS 1419: 1997.

REV	DESCRIPTION	DATE



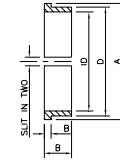
**SYARIKAT BEKALAN AIR SELANGOR SDN BHD**  
 PETI SURAT 5001,  
 JALAN PANTAI BARU,  
 99900 KUALA LUMPUR.  
 TEL NO : 03 - 2282 6244 / 03 - 2283 1111  
 FAX NO : 03 - 2282 5498  
 LAMAN WEB : www.syabas.com.my  
 EMAIL : puspol@syabas.com.my

PROJECT :  
 DRAWING TITLE :  
 ABS PIPE FITTINGS - (SHEET 2 OF 3)  
 DRAWN BY : SHAHRUL      DESIGNED : SAT  
 CHECKED : HS              APPROVED : LPL  
 SCALE : NTS                DATE : OCT 2006  
 DRAWING NO. :  
 SYA / ABS / STD / 002



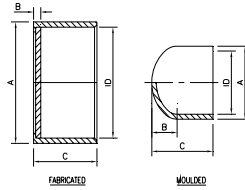
REDUCING BUSH

SIZE	ID (mm)	A (mm)	B (mm)	Z (mm)
100x50	60	114	65	28
100x80	89	114	65	13
150x100	114	168	92	28
200x150	168	219	120	3
250x225	225	250	135	12
315x250	250	315	168	33
355x315	315	315	188	20
450x400	400	450	235	22
500x450	450	500	260	25
560x500	500	560	275	15
630x500	500	630	288	28



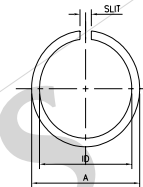
ANCHOR FLANGE

SIZE	ID (mm)	A (mm)	B (mm)
100	115	140	60
140	141	173	90
150	169	208	90
200	220	268	90
225	227	268	120
250	251	275	120
315	316	347	120
355	356	390	120
400	401	441	120
450	451	501	120
500	502	560	180
560	562	616	180
630	632	710	180



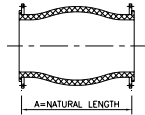
CAP

SIZE	ID (mm)	A (mm)	B (mm)	C (mm)	TYPE
100	114	138	101	139	M
140	140	173	114	170	M
150	168	203	127	200	F
200	219	264	164	250	F
225	225	272	169	247	F
250	250	302	186	275	F
315	315	380	232	341	F
355	355	428	260	384	F
400	400	482	291	440	F
450	450	542	326	493	F
500	500	602	361	548	F
560	560	674	382	593	F
630	630	602	758	688	F



ANCHOR SLEEVE

SIZE	ID (mm)	A (mm)	B (mm)	C (mm)	D (mm)
100	116	159	70	20	134
140	141	201	77	22	162
150	170	214	100	24	192
250	252	334	137	32	305
315	317	380	170	35	362
355	357	440	190	37	415
400	402	493	214	40	450
450	452	556	241	42	506
500	502	613	266	45	561
560	562	665	285	50	615
630	632	720	300	70	669



RUBBER EXPANSION JOINT

SIZE	A (mm)	B (mm)	C (mm)	D (mm)
100	135	18	15	10
150	180	18	15	10
200	205	25	15	14
250	240	25	15	14
315	260	25	15	14
355	265	25	15	14
400	265	25	15	14
450	265	25	15	14
500	254	25	15	16
560	254	25	10	16
630	354	25	10	16

NOTE:  
 1. FOR LEGEND, ABBREVIATIONS, AND GENERAL NOTES SEE DWG NO. SYABSTD01.  
 2. ALL DIMENSIONS ARE IN mm UNLESS OTHERWISE STATED.  
 3. DESIGN STANDARD COMPLY WITH MS 1419 : 1997.

SYABAS  
ALL COPY RIGHT RESERVED

REV	DESCRIPTION	DATE



**SYARIKAT BEKALAN AIR SELANGOR SDN BHD**  
 PETI SURAT 5001,  
 JALAN PANTAI BAHRU,  
 59990, KUALA LUMPUR.  
 TEL NO : 03 - 2282 6244 / 03 - 2283 1111  
 FAX NO : 03 - 2282 5498  
 LAMAN WEB : www.syabas.com.my  
 EMAIL : puspa@syabas.com.my

PROJECT :

DRAWING TITLE :  
 ABS PIPE FITTINGS - (SHEET 3 OF 3)

DRAWN BY : SHAHRUL      DESIGNED : SAT

CHECKED : HS              APPROVED : LPL

SCALE : NTS                DATE : OCT 2006

DRAWING NO:  
 SYA / ABS / STD / 003